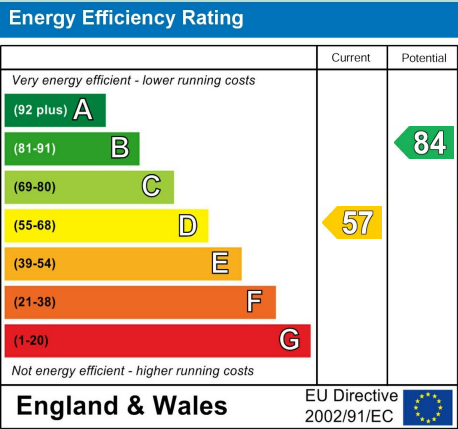


Council Tax Band: B
EPC Rating: D
Local Authority: East Suffolk Council



£875 Per
Per Calendar Month



Durban Road

Suffolk, NR33 0UH

- Bay fronted semi- detached home
- Off road parking
- 2 double bedrooms
- Recently modernised throughout
- Ample storage solutions
- Gas central heating
- Spacious rear garden
- 2 reception rooms
- EPC rating: D57
- Conveniently located for shops & amenities



Paul Hubbard Estate Agents
178-180 London Road South
Lowestoft
Suffolk
NR33 0BB

Contact Us
www.paulhubbardonline.com
01502 531218
info@paulhubbardonline.com

Agents Note: Whilst every care has been taken to prepare these sales particulars, they are for guidance purposes only. All measurements are approximate and for general guidance purposes only and whilst every care has been taken to ensure their accuracy, they should not be relied upon and potential buyers are advised to recheck the measurements

e - info@paulhubbardonline.com

t - 01502 531218



Location

This home is situated in the Heart of an English Coastal Town nestled in the most easterly point of the British Isles. With award-winning sandy beaches and breath-taking Victorian seafront gardens. Explore the Royal Plain Fountains, two piers, and a variety of independent eateries that will tantalise your taste buds. Education is a top priority here, with excellent schools for all ages. Commuting is a breeze with a bus station and train station that offer regular services to Norwich and surrounding areas. Located just 110 miles north-east of London, 38 miles north-east of Ipswich, and 22 miles south-east of Norwich.

Entrance hall

Laminate flooring, UPVC double glazed window to the side aspect, radiator, doors opening to the sitting room and dining room and stairs leading up to the first floor landing.

Sitting room

3.51 into bay x 3.79

Laminate flooring, UPVC double glazed bay window to the front aspect, radiator and a fireplace surround.

Dining room

3.94 max x 3.22 max

Laminate flooring, UPVC double glazed window to the rear aspect, fireplace surround, radiator, built-in storage cupboard, under stair storage cupboard and a door opens into the kitchen.

Kitchen

2.73 x 2.40

A small step down takes you to the kitchen which comprises; laminate flooring, x2 UPVC double glazed windows to the side aspect, radiator, wall mounted gas boiler, units above and below, laminate work services, insert composite 1.5 sink and drainer with mixer tap, built-in oven and gas hob, space for appliances and a door leading out to the rear garden.

Stairs leading to the first floor landing

Fitted carpet, loft access, UPVC double glazed window to the rear aspect and doors opening to bedrooms 1-2 & the family bathroom.

Bedroom 1

3.50 into bay x 3.18

Fitted carpet, radiator and a UPVC double glazed bay window to the front aspect.

Bedroom 2

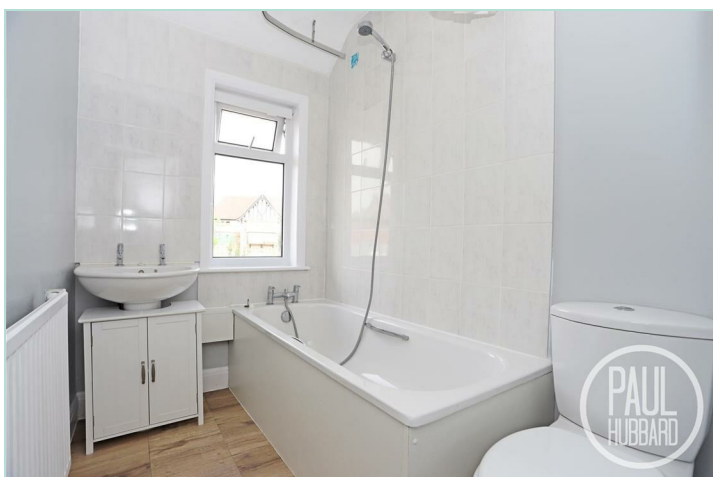
3.21 x 3.08

Fitted carpet, radiator and UPVC double glazed window to the rear aspect.

Bathroom

2.23 x 1.51

Laminate flooring, UPVC double glazed window to the front aspect, radiator, extractor fan, tiled splashback, suite comprises of a toilet, pedestal wash basin with mixer tap, a panelled bath with a mixer tap and a handheld shower attachment.



Outside

The property features a concrete driveway providing off road parking, complemented by a pathway along the side leading to a gate which provides access at the rear. A storm porch shelters the main entrance door, all partially enclosed by a timber fence surround.

The rear of the property boasts a concrete and paved patio area, a well-maintained lawn and a timber storage shed, all enclosed by a panel fence surround. Additionally, there are two brick-built garden stores for extra space.

Application note

If you are interested in applying for this property there is a simple process

- 1) Submit an application form to the office
- 2) Upon successful application you will be asked to pay your deposit
- 3) Once references pass you will be asked to pay your first months rent in advance
- 4) Then we can move you into the property!

*Deposit - Deposit is usually 5 weeks rent.

**Guarantor - A guarantor is required if your earnings don't match affordability, you are lacking a previous landlord reference or if you have had previous bad credit.

